

Koh Samui

VIP PRESENTATION

REGOLITH VILLAGE

Build your villa in one of the most
beautiful places in the world

REGOLITH



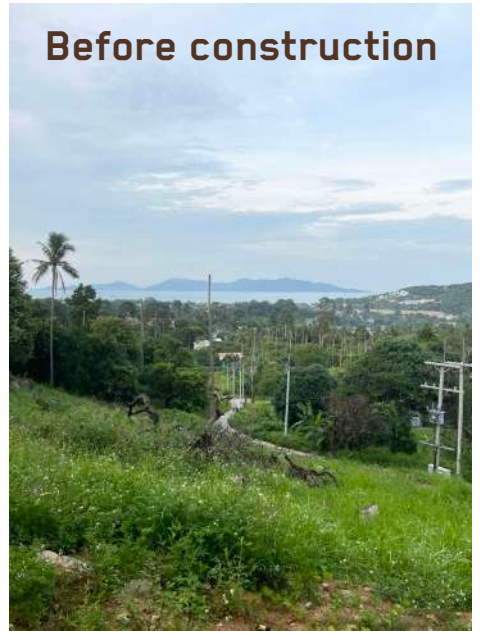


LOCATION

- ✓ **The plot is located in the most expensive area of Samui Island, Bo Phut** (an ecologically pristine place)
- ✓ **Just a 5-minute** drive to the stunning Chaweng Beach
- ✓ **Within a 10-minute** drive, you'll find the large Central Shopping Mall (the biggest on Samui, and incredibly beautiful)
- ✓ There is also the prestigious London School, which leads to admission at Cambridge University, **just a 10-minute drive away.**
- ✓ **A 30-minute** speedboat ride will take you to the Thai Ibiza - Koh Phangan, the liveliest place in Thailand.
- ✓ Samui Airport is ranked among the top 10 most beautiful and unique airports in the world and is only a 15-minute drive from the location.

**REGOLITH
VILLAGE**

[View the location on Google Maps](#)





BOUNTY COMMERCIALS HAVE BEEN FILMED ON SAMUI



CLIMATE

Samui Island, like the entire southern part of Thailand, has two seasons:

- Dry season, which lasts from May to December, and a rainy season, covering the period from January to April.
- The rainy season is often associated with prolonged rainfall throughout the day, but this does not apply to Samui Island. Even if it rains during the day, the sun shines brightly afterwards, the ground quickly dries up, and tourists can sunbathe. August, by the way, is the peak season on the island and is considered the most favorable month to visit.


Throughout the year, the average daytime air temperature ranges from +30°C to +32°C, while at night it drops to +20°C to +25°C. The water temperature remains between +26°C and +28°C.





The stages of project development

Detailed description of the implementation of Regolith Village





Stage 1%

50% payment

1/12 months



- 1. Deposit and company registration (1 month):**

We pay 10% of the project cost as a land deposit. We initiate the verification process and open companies for each house construction. Anton Zinovyev oversees the legal matters and serves as the project manager. Anton has been living there for a year and has been searching for the location and negotiating.
- 2. Planning and construction permit (1 month):**

The land verification and company registration for each house will take approximately three weeks. After the company registration, we finalize the planning, conduct engineering work, and obtain the construction permit.

- 3. Project approval (1 month)**

During this time, we need to finalize the design of each house. We will customize the layout according to your preferences, with designers and architects making adjustments based on a 200 sqm, 3-bedroom house. If desired, we can add a study or expand rooms. The interior design and decoration project will be developed and approved starting from the 5th month of construction, allowing for the addition of enhancements to the original light design.
- 4. Land acquisition and construction commencement (1 month)**

After the company registration, it is necessary to make a 40% payment of the project cost for land acquisition and construction commencement. The land acquisition process will take one week (5 working days).



Stage 2

75% payment

7/12 months

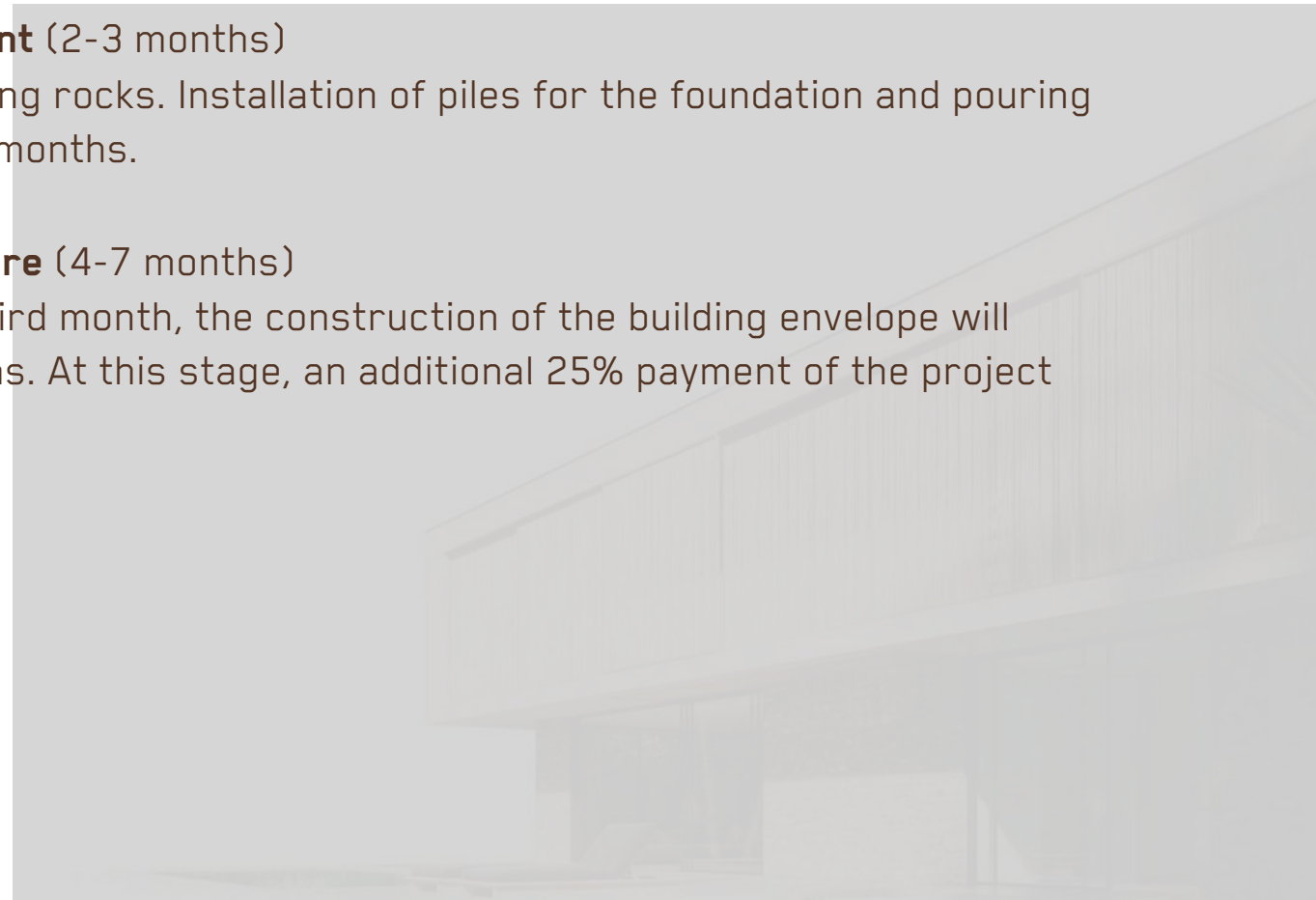


5. Construction commencement (2-3 months)

Clearing the site and removing rocks. Installation of piles for the foundation and pouring the foundation will take 2-3 months.

6. Construction of the structure (4-7 months)

Starting at the end of the third month, the construction of the building envelope will begin and last for 3-4 months. At this stage, an additional 25% payment of the project cost is required.





Stage 3

100% payment

12/12 months

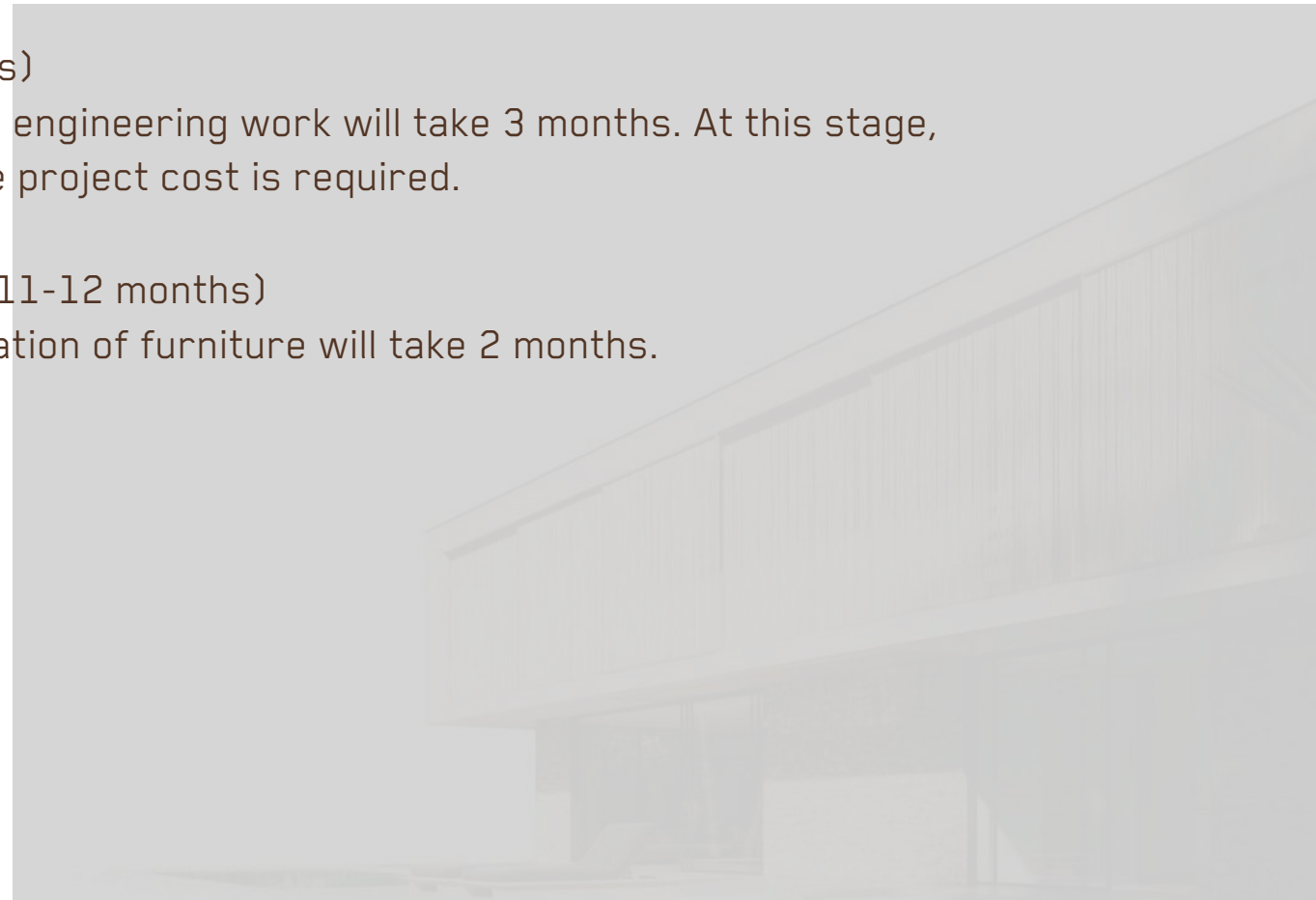


7. Initial finishing (8-10 months)

Initial finishing alongside the engineering work will take 3 months. At this stage, the final 25% payment of the project cost is required.

8. Final finishing + Furniture (11-12 months)

Internal finishing and installation of furniture will take 2 months.



5 MINUTES TO THE BEACH

Chaweng Beach - the center of tourist life on Samui Island. Here, you will find five-star hotels and the best restaurants. At the same time, there are also many modest bungalows and small Thai eateries.

Chaweng Beach stretches for nearly 8 kilometers, with a turquoise bay along its sandy shoreline. It is one of the most picturesque beaches in Thailand, with crystal-clear waters, tall tropical palm trees, and an abundance of exotic plants.



A BIT OF HISTORY ABOUT THE ISLAND

Samui Island is located in the Gulf of Thailand, approximately 700 kilometers from Bangkok and 40 kilometers from the eastern coast of Thailand. It is surrounded by 60 mostly uninhabited islands that are part of the Mu Ko Ang Thong National Park. The island covers an area of 228.7 square kilometers, with its highest point, Khao Pom Peak, reaching 635 meters.

Until the end of the 20th century, the island was an isolated, self-sufficient community with limited connections to the mainland, which helped it maintain its pristine natural beauty. The first tourists began visiting the island in the 1970s, and organized mass tourism started to develop in the late 1980s. Nowadays, Samui is known not only for its natural riches but also for its well-developed infrastructure.

In addition to enjoying the gentle waves of the Gulf of Thailand on the island's numerous beaches, tourists have the opportunity to engage in diving to explore the magical underwater world of the island. They can also visit the peculiar rock formation known as "Grandma and Grandpa," the Oceanarium and Tiger Zoo, the Big Buddha Statue, and the Wat Khunaram Temple.



REGOLITH VILLAGE

Regolith is beginning the construction of villas



VIP-villa
in Regolith Village

Cost
550.000\$

Construction period
12 months

Payment process
In three stages

Construction progress tracking
Through video and live updates
from Regolith partners



PROPERTY FEATURES

Best ocean view

**Two-story house
Three bedrooms**

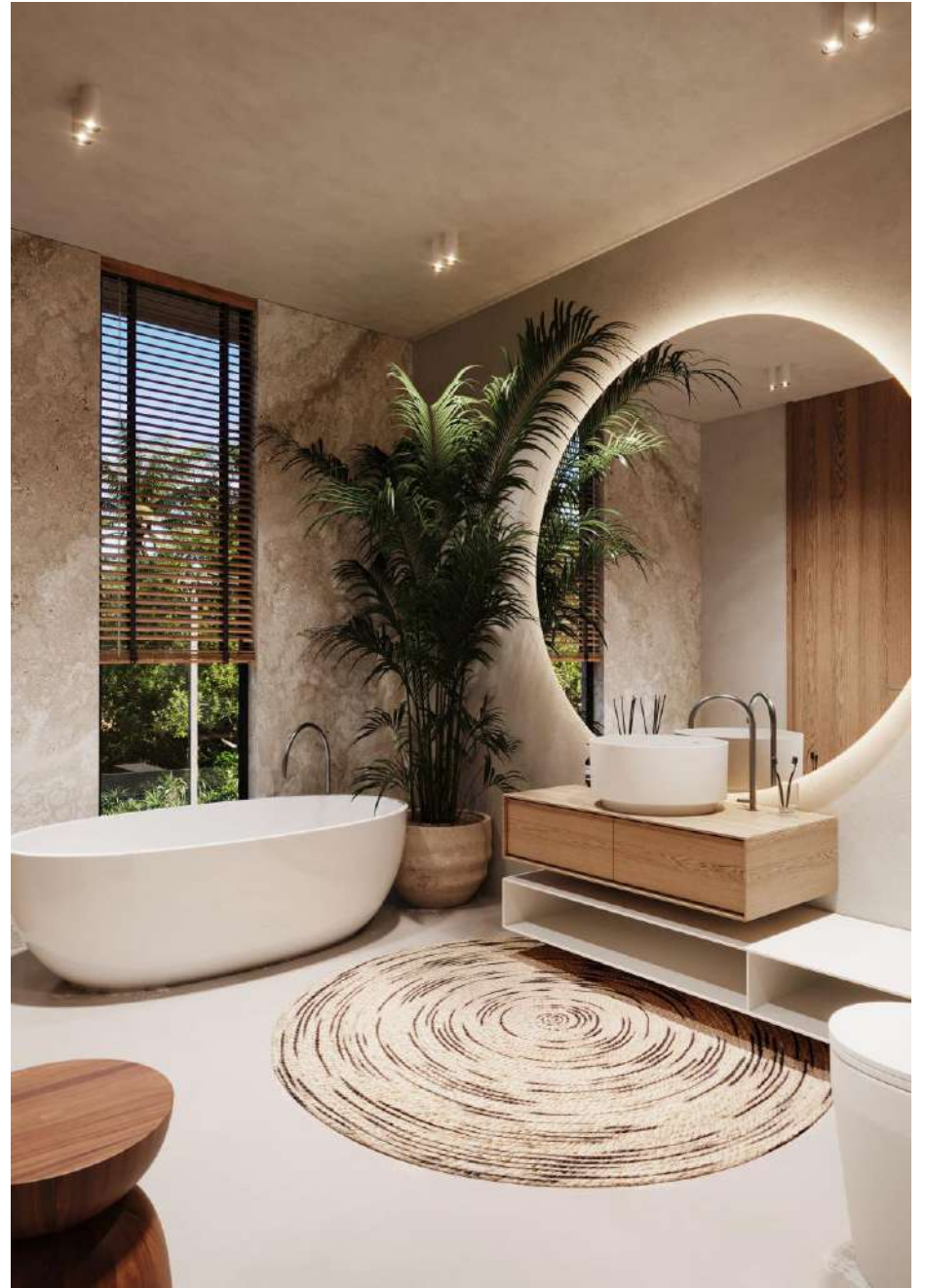
Large terrace with pool

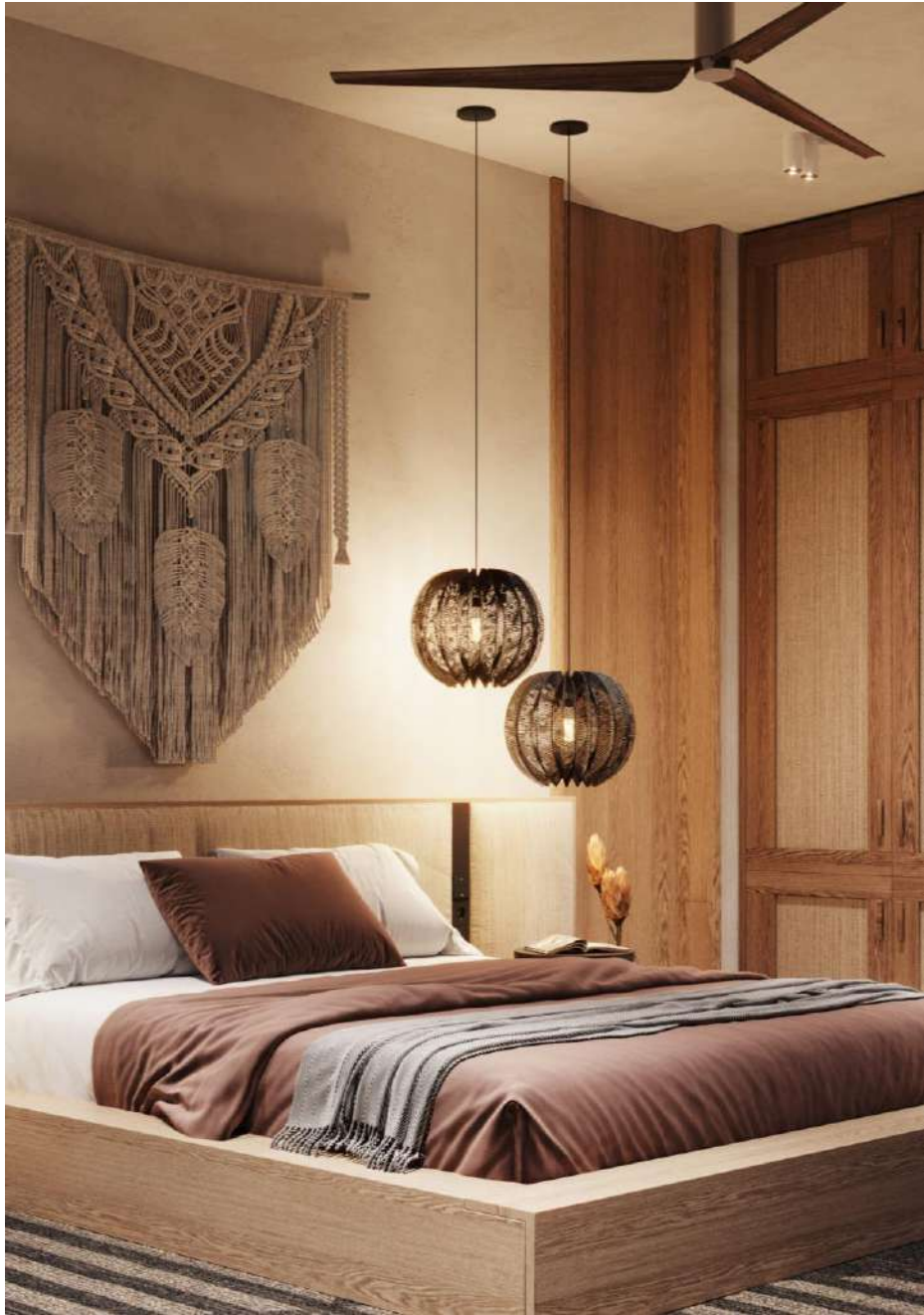
**Land area - 500 sqm
House area - 185 sqm**

Beautiful landscaping and decor

**Parking spaces
2 for cars and 2 for bikes**







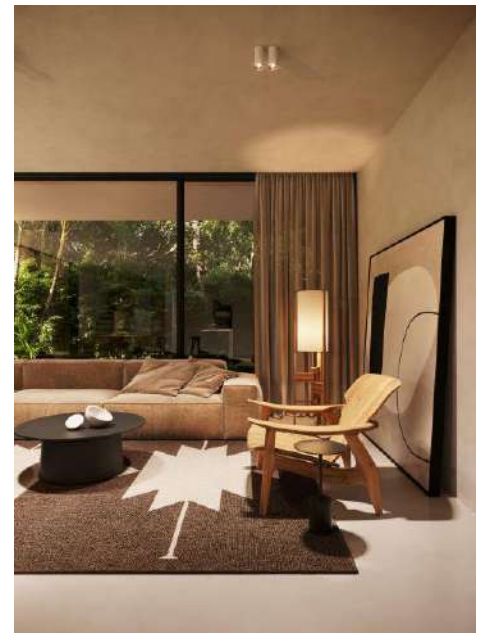


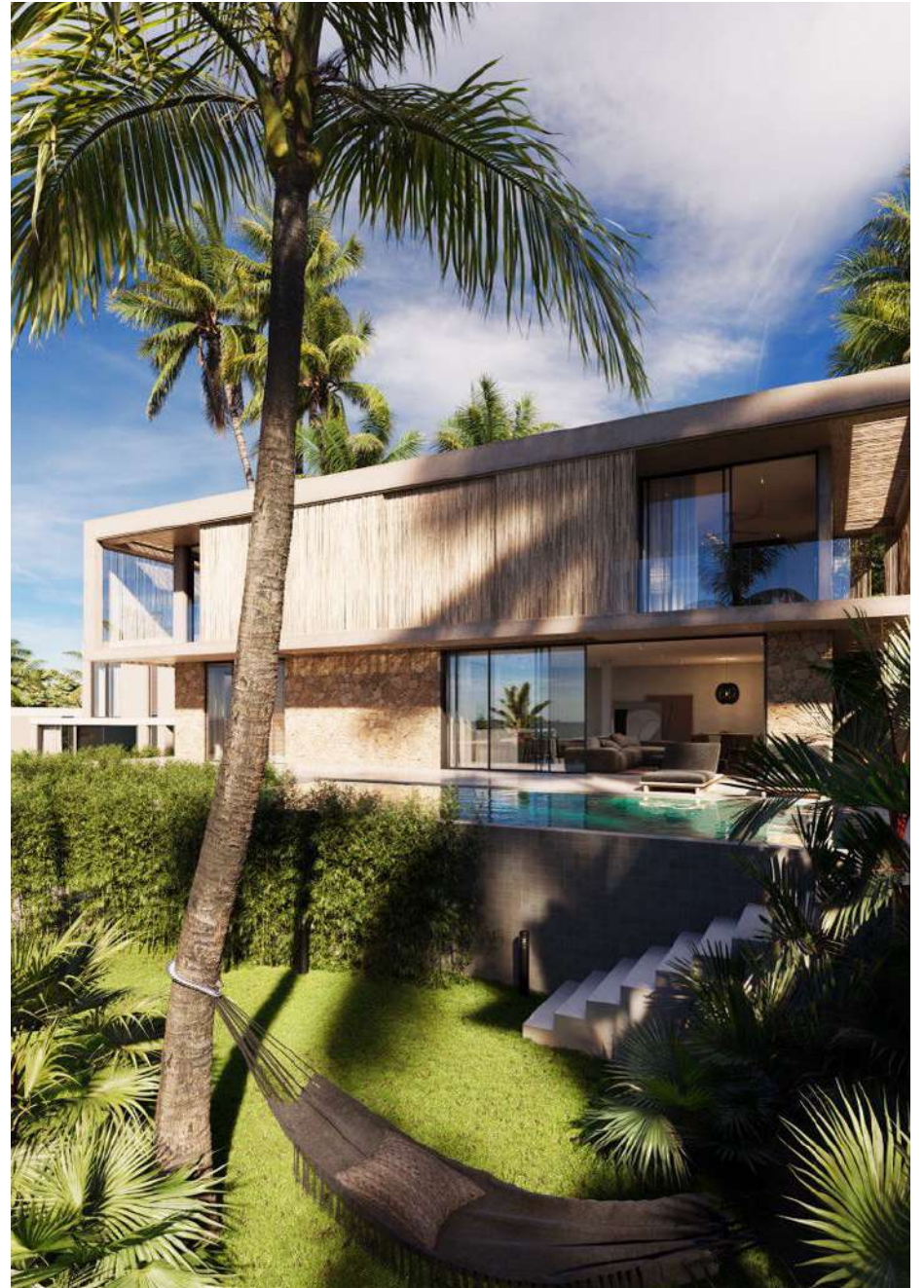


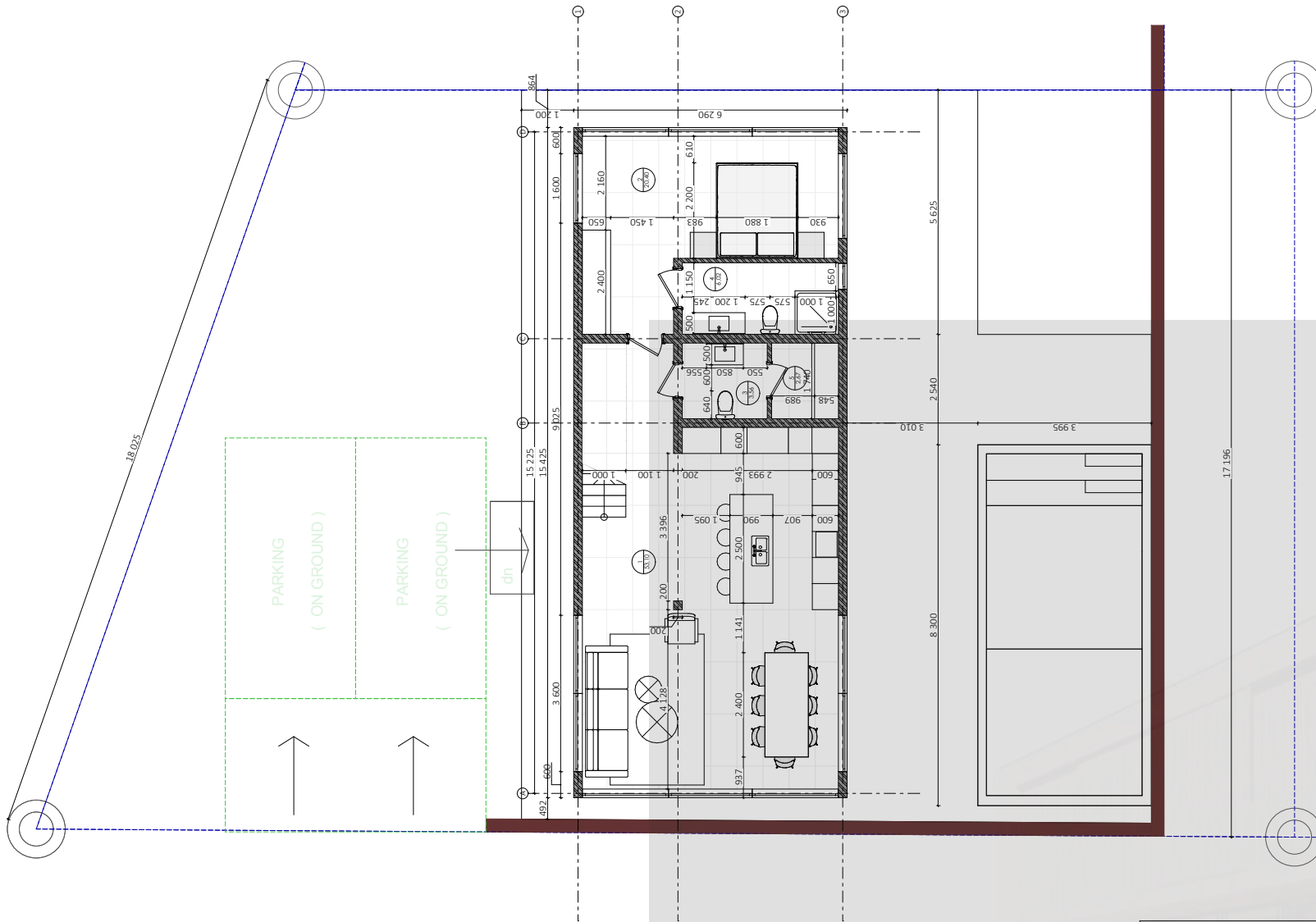






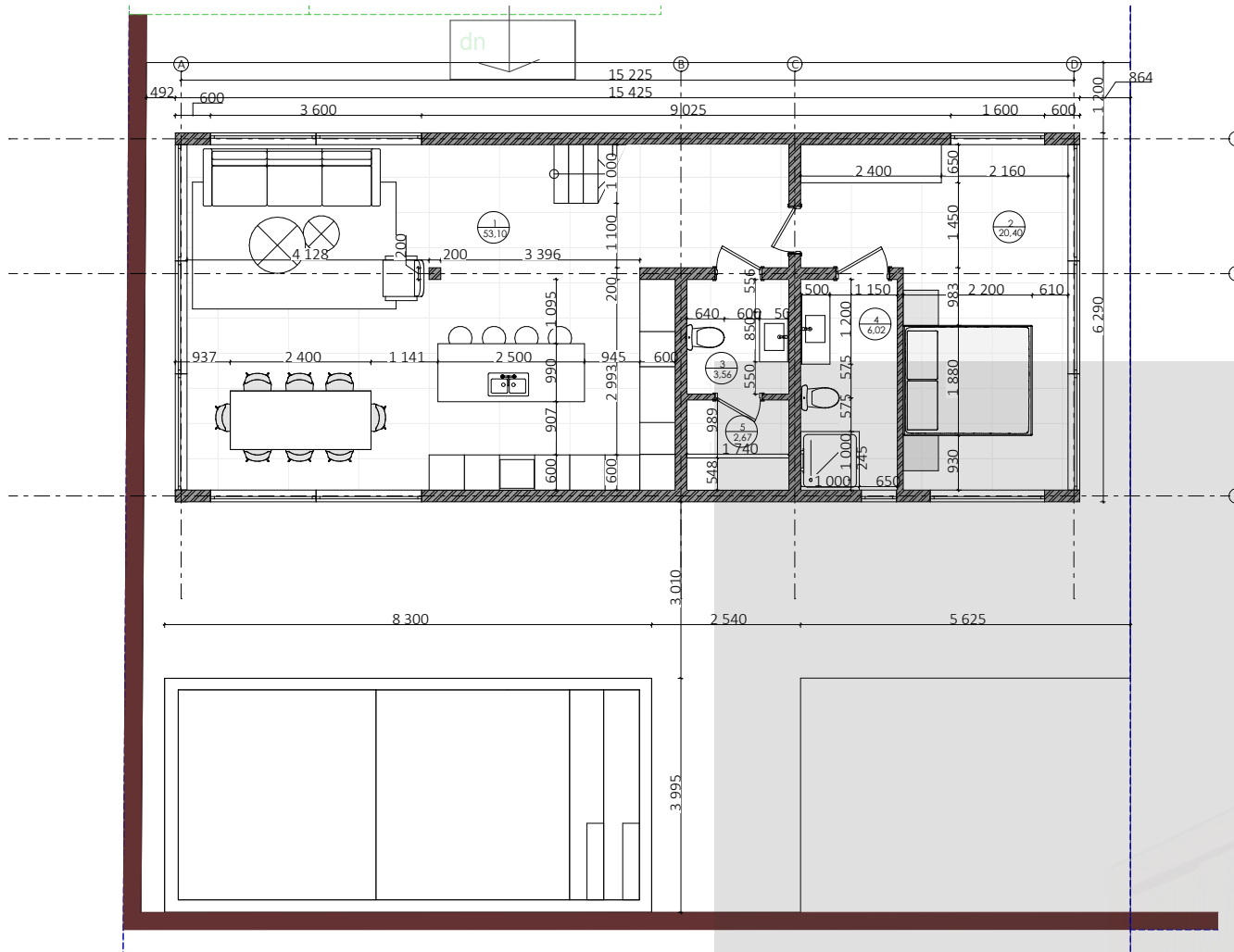






Concrete Villa
Thailand, Samui

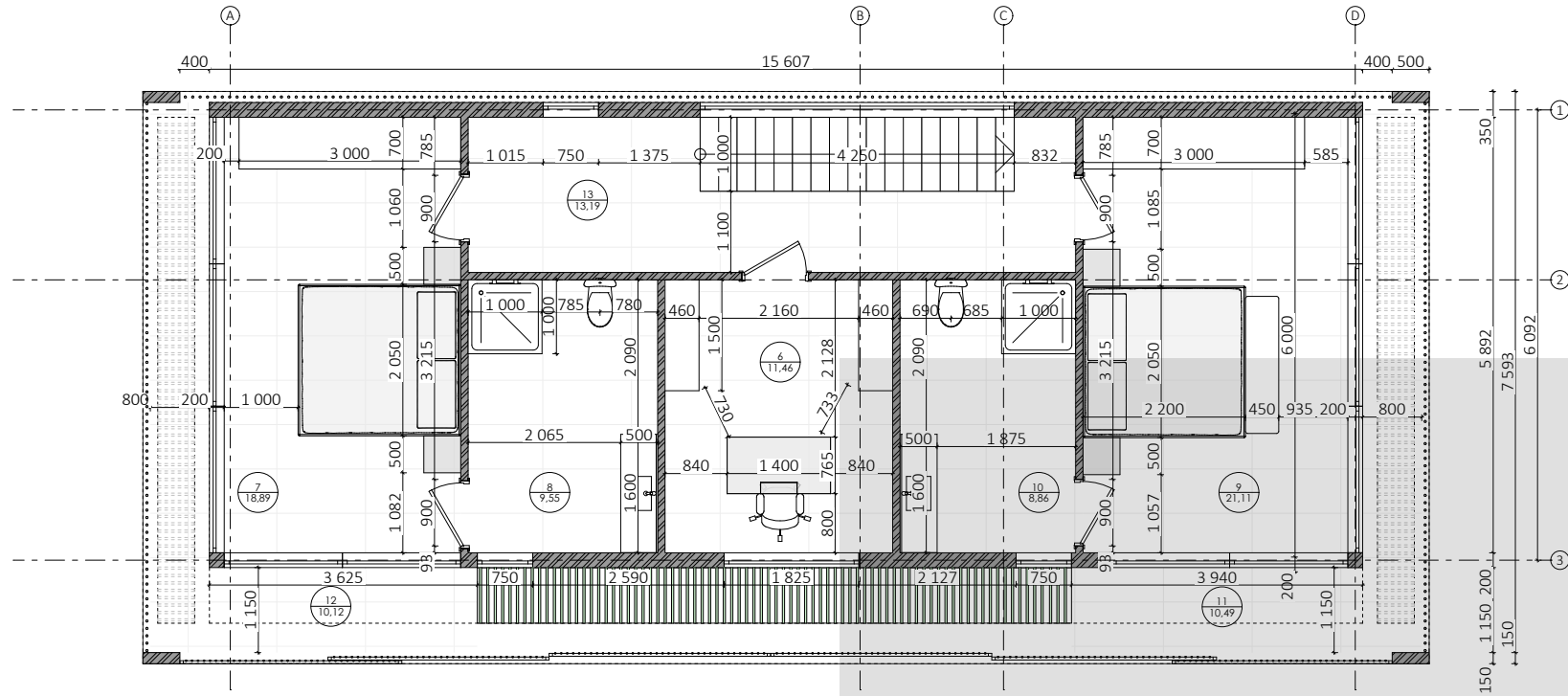
Siteplan
001



1	livingroom	53,10
2	badroom	20,40
3	toilet	3,56
4	bathroom	6,02
5	serverroom	2,67
Total		85,75 m ²

Concrete Villa
Thailand, Samui

Plan 1-st floor
002

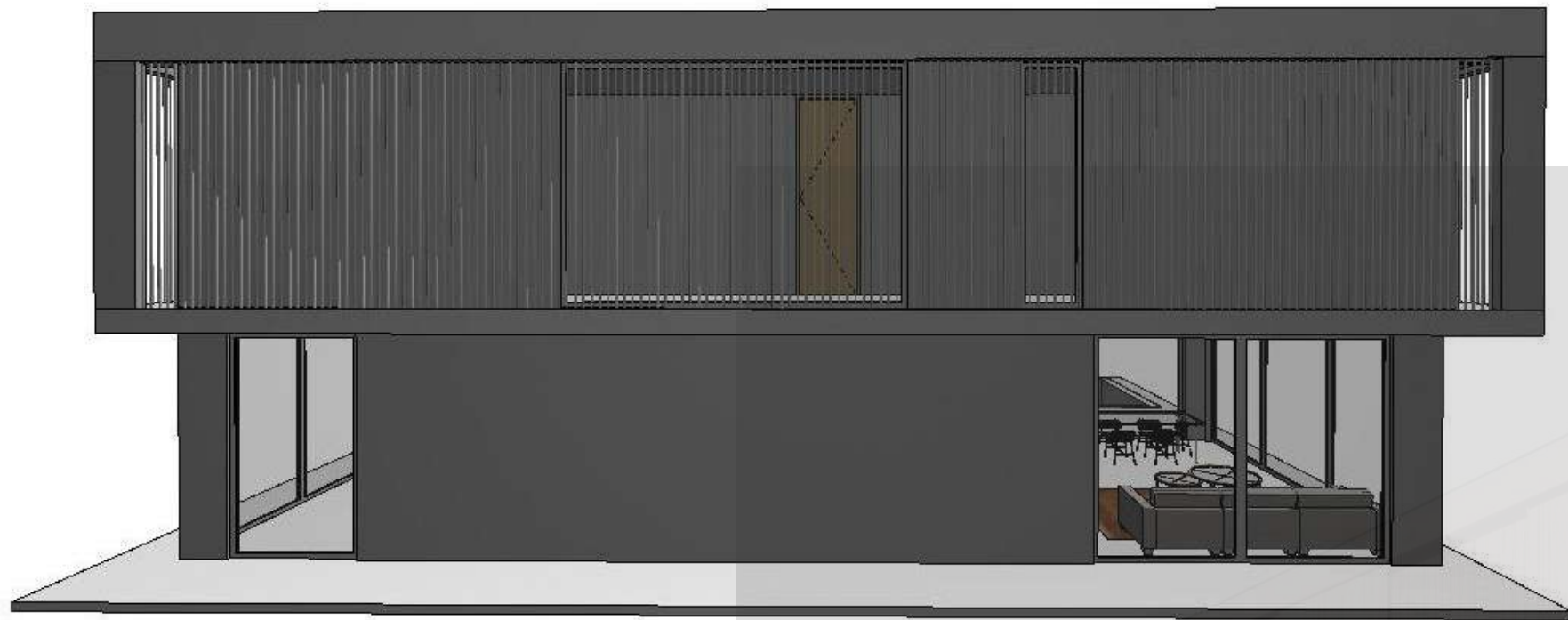


No	Name	m2
6	office	11,46
7	master bedroom	18,89
8	bathroom 2	9,55
9	bedroom 3	21,11
10	bathroom 3	8,86
11	terrace 1 2,9 m ² coef 0,3	6,65
12	terrace 2 2,87 m ² coef 0,3	6,37
13	hall	13,19
Total		184 m ²

Concrete Villa
Thailand, Samui

Plan 2-st floor
003







CURRENT OFFERS

In Regolith Village, there are a total of six houses, with four of them already sold. Currently, two villas are available for purchase.

